

2011

Year in Review



Louisiana's
Bayou Region
Growth, prosperity ... a way of life.

Powered by **SLEC**
South Louisiana Economic Council
Assumption - Lake Charles - St. Mary - Terrebonne

Contents

- Letter from the CEO.....2
- 2011 SLEC Board.....3
- Year In Review.....4
- SLEC Family.....8
- Tier I Program.....13
- Special Projects.....17
- Looking Forward.....19
- Facts & Figures.....21
- Appendices.....28



Letter from the CEO

It is my great privilege to deliver to the people and businesses of the Bayou Region, this annual report of the activities of the South Louisiana Economic Council. The inclination of these annual reports is always to identify the year as one of incredible challenge and growth. While this certainly was true for 2011, after 28 plus years in Bayou Region economic development, I can attest that every year here in the Bayou Region can lay claim to being both incredible and challenging. Leveraging opportunity and remaining resilient in times of challenge is just what we do here and this year was no different.



The past year has afforded our region a well-deserved pause, free from storms or man-made events. It has been a year where our core industry, oil and gas, endured an unfounded hyper-correction of regulatory burden following the 2010 Deepwater Horizon incident, a burden that has only recently begun to ease. The year also saw the election of a new slate of leaders both at the state and local level who ran on a pro-business platform that we anticipate will serve to strengthen our area's economic leadership.

2011 also saw the selection of new leadership on the SLEC board of directors and stronger cohesion among the leadership of the four parishes, both of which are certain to lay a solid foundation for new and innovative growth for years to come.

So it is then with great anticipation that we enter into 2012, a year that I am certain will be one of incredible growth and prosperity.

Sincerely,

A handwritten signature in black ink, appearing to read 'Vic Lafont', with a stylized flourish at the end.

Vic Lafont
President and CEO

2011 Training & Events

- **January 26** – Bayou Region Marketing Committee Meeting
- **February 15** – Regional Meeting with LED Secretary Stephen Moret

2011 SLEC Board

Mr. Kenneth Smith
Chairman
T. Baker Smith, LLC

Mr. Eric Danos
Vice President
Danos & Curole Marine

Dr. Ken Rachal
Secretary/Treasurer
KV Associates

Dr. Shawn Mauldin
At-Large
Nicholls State University

Mr. J.J. Buquet, III
Buquet Distributors

Mr. Damon Chouest
Edison Chouest Offshore

Mr. Dan Conrad
Conrad Industries

Mr. Kurt Crosby
Crosby Tugs

Mr. Mark Folsie
Coastal Commerce Bank

Mr. Ben Giardina
Acadia Development Properties

Mr. Joel Landry
Landry Farms

Mr. Scott Melancon
First National Bank

Mr. Donny Rouse
Rouses Supermarkets

Mr. Scotty Tibbs
Gulf Craft, LLC

Mr. Vic Lafont, President/CEO
South Louisiana Economic Council

2011 Training & Events

- **May 26** – Starting and Financing Your Business
- **June 30** – 2011 Hurricane Season Survival Workshop

Year In Review

Strategic Action Plan and Capital Campaign

The South Louisiana Economic Council has created an aggressive, strategic, economic development business retention, expansion and attraction plan. SLEC has input and support from the private and public sector leaders within Assumption, Lafourche, St. Mary and Terrebonne Parishes – the Bayou Region. As the regional economic development organization, SLEC seeks to sustain and expand its economic development programs for business and industry through their direct investment in SLEC, an investment that complements Bayou Region culture by yielding a return to business and industry.

In direct partnership with Bayou Region business and industry, SLEC is building a world-class, regional economic development organization tasked with a bold new Strategic Action Plan to tackle both opportunities and threats facing the Bayou Region's ongoing and future prosperity. SLEC's core prosperity strategies for 2012 through 2014 are:

- Increase business retention and expansion
- Stand up advanced technologies
- Advance business attraction
- Expand economic development infrastructure
- Lead advocacy



2011 Training & Events

- **July 11 to 14** – Manning Passing Academy
- **August 17 & 18** – LSU Mobile Classroom

Babington Hall

Working with Nicholls State University, SLEC is underway with renovations of Babington Hall to house SLEC's expanded administrative offices. The \$450,000 project is funded with grants from the State Capital Outlay Program, the Louisiana Business Incubator Association, and Nicholls State University. Engineering is completed and solicitations for bids will be advertised this winter to remodel the central, one-story section between the two towers. Improvements up to 4,000 square feet will provide new SLEC administrative and program offices and meeting room space. Future plans call for the renovation of both towers to include more service center space and executive housing units for corporation hosting events or in times of emergency.

Entrepreneur Training Series

SLEC is in its eighth year of providing entrepreneur training to entrepreneurs through a ten week training course utilizing the Kaufman Foundation, Fast Trac curriculum. The series is one of the most successful in Louisiana with more than four hundred graduates to its credit.

In 2011, the series was expanded to include partnerships with Options for Independence, a community-based service organization that offered the training through an SBA grant.

Bayou Region Center for Economic Growth

SLEC continues to operate a business incubator located in Thibodaux. Future plans are to migrate these operations to Nicholls State University upon completion of renovations to Babington Hall that will also house SLEC's offices and a second service center.

2011 Training & Events

- **August 25** – Bayou Region Marketing Committee Meeting
- **August 25** – Regional Meeting with LED Secretary Stephen Moret

Small and Emerging Business Development

SLEC is the regional coordinator of the Small and Emerging Business Development Program. This innovative and effective program makes it easy for Bayou Region small businesses to engage essential professional services in areas such as entrepreneurial training, marketing, computer skills, accounting, business planning, legal and industry-specific assistance. Through the SEBD program, companies can have a percentage of the costs of these services offset to make accessing these critical services possible. The SEBD program assisted 38 businesses in 2011. *(See table on page 28.)*

SCORE

SLEC continues to coordinate for the formation of a Bayou Region Chapter of SCORE to augment the current offering free and confidential small business advice for entrepreneurs. Known as "Counselors to America's Small Business" SCORE is a nonprofit association dedicated to educating entrepreneurs and helping small business start, grow and succeed nationwide. SCORE is a resource partner with the U.S. Small Business Administration (SBA). A chapter, once formed, would have a strong working relationship with SLEC and its small business services.

Small Business Development Center

The Bayou Region Small Business Development Center is located at the SLEC offices on the campus of Nicholls State University and is part of a state and national consortium of similar small business development networks. The center serves businesses in Assumption, Lafourche, and Terrebonne parishes by providing managerial and technical assistance to small business owners. SLEC maintains a close relationship with the Small Business Development Center in order to continue to provide high-quality assistance to Bayou Region small businesses.

2011 Training & Events

- **September 15 & 29** – QuickBooks Workshop Lab
- **October 6** – Louisiana Economic Outlook Luncheon

Approximately 406 Bayou Region companies – 122 startup businesses and 284 existing businesses – were assisted in 2011. 340 clients were helped within SLEC’s four-parish region. 50 clients were helped in SLEC’s outer parishes. *(See table on page 28.)*

Community Development Institute

With funding from the Louisiana Department of Economic Development, SLEC provided scholarships for regional teams to attend CDI, where they trained together and then returned to implement and apply the latest in community and economic development practices to Bayou Region communities.

Lin Kiger with the Lafourche Chamber of Commerce completed his 2nd year and plans to attend in 2012 for his 3rd and final year.

Cindy Cutrera with the Port of St. Mary completed her 3rd and final year and plans to take the final exam required for graduation in early 2012.

For 2012, SLEC has \$3,000 budgeted to cover CDI registration fees for 5 participants.

Gulf Coast Marketplace

Options for Independence, in collaboration with several Louisiana economic developers and business leaders, has developed an e-commerce solution for community recovery. The marketplace was launched in the summer of 2011 as the “The Gulf Coast Marketplace” and serves as an online consignment shop for hand-crafted products and services created by people living along the Gulf Coast. This virtual marketplace serves as an economic stimulator for the region, while promoting and celebrating the rich diversity of cultures and talents that exist throughout the Gulf Coast.

2011 Training & Events

- **October 19** – Norwegian/Louisiana Oil & Gas B2B Workshop
- **October 19 & 20** – LSU Mobile Classroom

The SLEC Family

LA 1 Coalition

The LA 1 Coalition seeks to secure the highway infrastructure from US Hwy. 90 to Port Fourchon/Grand Isle.

For over 50 years, a relatively small region of south Louisiana has weathered the ups and downs of the oil and gas industry while providing critical services that literally help to fuel our nation. The convenient location of Port Fourchon has made this southernmost port in Louisiana the port of choice for the expanding industry, and as offshore energy production increases, so will activity at this important service center. Unfortunately, this increased activity will also produce increased strain on an already overburdened two-lane state highway—LA Hwy. 1, the only road connecting Port Fourchon to the rest of the country. A road originally built decades ago to ease travel for those living in the communities of rural southern Lafourche parish has grown to become a critical link in domestic energy production.

LA 1, like much of coastal Louisiana experiences a high rate of subsidence, and federal studies have warned that the existing at-grade highway will experience repeated tidal inundation by the year 2030 as a result of continued subsidence and sea level rise impacts. The LA 1 Coalition has lead efforts with local, state and federal agencies to raise over \$370 million to date to replace the existing, at-grade LA 1 with an elevated highway capable of withstanding 100 Year storm events and securing highway access to Port Fourchon.



Restore or Retreat

Restore or Retreat is a non-profit coastal advocacy group created by coastal Louisiana residents and stakeholders who recognize that the Barataria and Terrebonne basins are the two most rapidly eroding estuaries on earth, and that this erosion represents an economic and ecological crisis. With a growing membership of over 200 businesses and individuals, ROR seeks to identify and expedite the implementation of aggressive, large-scale restoration projects to protect this irreplaceable region.

For several years, our state has been focused on making significant strides forward in its quest for comprehensive restoration and hurricane protection. More than a year after the environmental crisis in the Gulf of Mexico, the federal government and nation appear committed as well to making our coast whole again. There are positive signs for the future: the 2012 update of the State's Master Plan, the engagement of the Gulf Coast Ecosystem Restoration Task Force headed by New Orleans native Lisa Jackson, and the \$1 billion "down payment" by BP to the Gulf Coast states. These all provide hope for our damaged and fragile communities, but much work remains.

ROR is actively engaged in the day-to-day effort to aggressively implement sustainable restoration projects for our area; in other words, we "SUPPORT THE SOLUTION." For 11 years, ROR has been working diligently to advocate on the state and federal level for comprehensive, sustainable restoration projects that our area so desperately needs and deserves:



- ROR has been a consistent voice for the Barataria and Terrebonne basins in coastal planning efforts by the State of Louisiana and U.S. Army Corps of Engineers.
- ROR is proactive in the development of our own “plan of action” in conjunction with Lafourche and Terrebonne Parishes, consisting of the most important projects from our area compiled from the state’s master plan, WRDA authorized projects, parish master plans, and the expertise of Dr. Denise Reed as our technical advisor.
- ROR has played an integral role in getting the Davis Pond freshwater diversion project operating to its maximum potential and is also focused on the implementation of the emergency capacity restoration of Bayou Lafourche.
- ROR also works throughout the year on other critical projects to our area, such as: long distance pipeline sediment delivery for the Barataria and Terrebonne Basins, Mississippi River Delta Management Study, Caminada Headland and Beach restoration, and the development of a long-term, large-scale regional restoration project.
- ROR has been engaged in the many planning efforts, post-spill, including the Natural Resources Damage Assessment Process, the effort to dedicate a significant portion of the Clean Water Act penalties and fines to the Gulf Coast States, and the Gulf Coast Ecosystem Restoration Task Force, just to name a few.



Gulf Economic Survival Team

In 2010, the Gulf Economic Survival Team (GEST) was created by then-Louisiana Lt. Governor Scott Angelle, at the request of Governor Bobby Jindal, in response to President Obama's announcement of a deepwater drilling moratorium in the Gulf of Mexico. While GEST was initially formed as a grassroots initiative to oppose the moratorium, we immediately recognized that the permit delays in the shallow water and deepwater were causing devastating economic hardships to small businesses and middle class Americans along the Gulf coast and the country. GEST has served as a liaison between the State of Louisiana, the federal government and industry to resolve permitting hurdles in order to resume permit approvals in the Gulf of Mexico.

Since June 2010, GEST, along with Louisiana DNR Secretary Scott Angelle, has had 24 meetings with the Department of Interior's Secretary Salazar or the Bureau of Ocean Management, Regulation and Enforcement (BOEMRE) Director Michael Bromwich in order to work through the permitting hurdles. GEST has hosted several strategic planning meetings and workshops with industry to develop policy initiatives and best management practices to meet new federal requirements. GEST efforts have resulted in BOEMRE actions, such as issuance of FAQs and guidance documents on new requirements, a commitment to resolve the "should to must" issue; clarity and transparency for worst-case discharge calculations; expanding environmental assessment exemptions, permit application checklists, and a permit tracking tool. In addition, upon GEST's request, BOEMRE hosted a technical permitting workshop in New Orleans for the oil and gas operators.



GEST, in conjunction with SLEC, commissioned a study by IHS Global Insight (USA) Inc. and IHS CERA Inc. to analyze how far-reaching the economic consequences of slowed energy activity in the Gulf are to the country. The results of the study, “Restarting the Engine—Securing American Jobs, Investment and Energy Security,” confirmed what many small businesses and large corporations already knew – the downturn in energy exploration and production in the Gulf of Mexico has affected the entire country.

GEST has been actively engaged in Washington D.C. by working with key Congressional committees, and their staff. GEST and its members have testified at various Congressional committee hearings and have been a valuable resource of information for the committee members. In addition, GEST coordinated an effort to have 20 national organizations sign a letter urging President Obama to restore the pace of permitting in order to create jobs and increase revenues. As a follow up, GEST met with several members of the Joint Deficit Reduction Committee (also known as the “Super Committee”), the House Ways & Means Committee and the Senate Budget Committee to inform them of the opportunities of additional federal tax and royalty revenues that could be realized if the federal government resumes the pace of permitting to levels commensurate with industry’s ability to invest in the Gulf of Mexico.



Tier 1 Program

Tier 1 is a recurring source of funding to SLEC from Louisiana Economic Development. The funding supports a number of other activities including a portion of SLEC's administrative support staff salaries and the cost to maintain the Bayou Region website. Other activities funded under Tier 1 include the Business Retention Site Visit Program, the Regional Marketing Committee, and Business Expansion/Attraction Program. 2011 Tier 1 activities also included:

- SLEC updated the Bayou Region Profile that includes listings of industrial parks, top economic drivers, recent announcements, and planned infrastructure upgrades. We updated the Region's inventory of Education Assets.
- Adding 13 buildings and 12 sites to the Bayou Region web-based inventory of buildings and sites. Current listings include 19 buildings and 41 sites.
- Four quarterly labor and employment reports. The data and other key economic indicators are reported to the public through SLEC's Bayou Barometer, a quarterly newsletter funded by Tier 1.
- Working with a committee of Parish Economic Development Organizations, SLEC, with the property owner's permission, compiled and evaluated a list of properties for sale throughout the region that would be considered eligible for inclusion in the State's Certified Development Site Program. The committee selected three sites, two in St. Mary and one in Terrebonne Parish that met the minimum requirements for further consideration.
- SLEC published two ads in the monthly publication, *Trade and Industry Development*, one in the Spring, the other in the Fall.





SLEC also updated the Bayou Region Business Development Plan and SLEC's target industry sectors. Sectors targeted for attraction with their corresponding NAICS Code are:

Bayou Region Targets

- 211 – Oil and Gas Extraction
- 3118 – Commercial Bakeries/Cookies/Pasta/Tortilla/Cracker Manufacturing
- 3119 – Other Food Manufacturing/Snacks/Coffee/Nuts/Flavorings and Seasonings
- 33121 – Iron and Steel Pipe Manufacturing
- 3321 – Forged Steel and Stamping
- 3323 – Architectural and Structural Metals Manufacturing
- 3324 – Boiler, Tank, and Shipping Container Manufacturing
- 3327 – Machine Shops; Turned Products; Screw, Nut, and Bolt Manufacturing
- 33313 – Mining and Oil and Gas Field Machinery Manufacturing
- 333911 – Pump and Pumping Equipment Manufacturing
- 3363 – Motor Vehicle Parts Manufacturing
- 3366 – Ship and Boat Building



- 336611 – Oil and Gas Offshore Floating Platform Manufacturing
- 486 – Pipeline Transportation
- 562910 – Remediation Services

2011 SLEC Expansion-Attraction Results

SLEC currently has 27 prospects in which contact has been made and a level of interest in Louisiana's Gulf Coast region has been established. Over the past 12 months, meetings were held with 15 of these companies. SLEC receives inquiries from a number of sources including Request for Information (RFI's) through the Bayou Region Web Site, SLEC outreach activities, and from Louisiana Economic Development. This year SLEC processed 42 RFI's.

Bayou Region Economic Development Marketing Committee

The Bayou Region Economic Development Marketing Committee meets quarterly. The Committee is comprised of the economic development professionals within the region. Its mission is to review industry attraction leads for best fit within the region, to review funding priorities for the region and provide a unified voice on matters of mutual interest to the four parishes.



The marketing committee consists of representatives of

- Assumption Area Chamber of Commerce
- Assumption Parish Economic Development
- Bayou Industrial Group
- Chamber of Lafourche and the Bayou Region
- City of Thibodaux Economic Development
- Entergy Economic Development
- Greater Lafourche Port Commission
- Houma-Terrebonne Chamber of Commerce
- Lafourche Economic Development
- Louisiana Economic Development
- Louisiana Small Business Development Center
- Port of Morgan City
- South Central Industrial Association
- South Central Planning and Development Commission
- South Louisiana Economic Council
- St. Mary Chamber of Commerce
- St. Mary Economic Development
- Terrebonne Parish Economic Development Authority
- Thibodaux Chamber of Commerce

Four meetings of the committee were held in 2011.



Special Projects

Louisiana Interactive Technologies, LLC

Louisiana Interactive Technologies, LLC (LIT) is a new Veteran Owned Small Business which registered in Louisiana on August 3, 2011. This company is working with SLEC to bring the newest form of advertising media to our state - the hyperscreen. The hyperscreen is a 9-foot tall, touch-interactive display. It allows users to interact by receiving text messages, emails, coupons and integrated social media. A hyperscreen advertisement is controlled directly by the advertiser via the web and allows them to update their ads anytime they wish. When sufficient placement agreements for the hyperscreens are finalized, LIT has convinced the manufacturer - hyperscreens, LLC - to relocate their manufacturing and assembly facility to the Bayou Region.

Manning Passing Academy

The Manning Passing Academy, now in its 17th year, is hosted by Nicholls State University with deep support from SLEC. The camp is operated by the first family of football: Archie, Cooper, Peyton and Eli Manning and is always an integral part of their lives. The camp will continue in 2011 with possible long-term commitments on the horizon.

An Economic Impact Study was performed this year that measured an average annual economic impact of \$1,871,371 to the Bayou region. A Drainage Plan Study was also conducted to address the re-leveling of 25 practice fields at an estimated cost of \$750,000 which is currently being pursued by SLEC. If successful, the camp will remain at Nicholls for the next 10 years.



Advanced Technologies

Facilitating the development of partnerships that bring advanced technologies and the “competitive edge” to Bayou Region businesses is a top SLEC priority. Specific focus is made on 3D Advanced Technologies and Simulation Solutions to leverage Bayou Region businesses, their expertise, and our creative culture in the areas of: ship design/construction, oil rig design/fabrication, training operators, manufacturing, major equipment maintenance and repair, and fostering safety and competency in the workforce.

Through a consultancy, SLEC plans to:

- Advance partnerships between SLEC, Louisiana Immersive Technologies Enterprise, Christie Digital, third-party software developers and other stakeholders to include national laboratories and international markets.
- Stand up a SLEC CAVE™ for technology introduction, training, product development and custom marketing services.
- Evaluate and enter into such partnership opportunities based on new technology and equipment, new engineering and software staff, and small business start-up opportunities being located in the Bayou Region, as well as potential revenue generation for SLEC
- Provide economic development incentives and advocacy for the deployment of 3D Advanced Visualization and Simulation Solutions being deployed to businesses throughout the Bayou Region.



Looking Forward

Innovation and Technical Assistance Program

Small businesses continue to feel the impact of storm damage through a series of hurricanes that have hit south Louisiana in the past 5 years. SLEC reinstated a very successful program to provide assistance program to Louisiana small businesses damaged as a direct result of the Hurricanes Ike, Rita, and Gustav.

Services are to include:

- Entrepreneurial Training
- Workshops and Seminars
- One on One Business Counseling
- Business Plan Development
- Marketing Research & Strategy
- Strategic Planning
- Management Assistance
- Financial Analysis
- Record Keeping Systems Training
- Technology Advancement.

Bayou Region Center for Economic Growth & Technology

SLEC operates and has planned a series of business incubators and service centers known as the Center for Economic Growth and Technology. Currently, the first business incubator is located in Thibodaux on LA Highway 1. SLEC is working with Nicholls State University to transition the incubator pending renovations to Babington Hall that will house SLEC's offices and a second service center.



Technology Incubator & Command Center

SLEC has been awarded \$1,000,000 by Lafourche Parish for the construction of the Center which will be located behind North Babington on the NSU Campus. The highest and best use of a business incubator facility has been determined to be to provide space, services and equipment to small businesses and technical service providers while they are recovering from any disaster, a need demonstrated following the Hurricanes Gustav and Ike. Acquisition of funding is still in progress.

eCenter

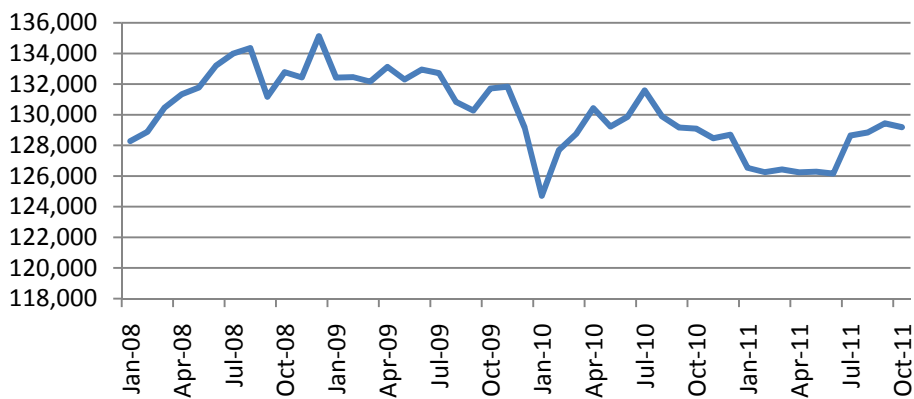
The Bayou Entrepreneurship Center is a project led by persons who share a deep commitment and devotion to fostering and developing the process of entrepreneurship in Southeast Louisiana. The project recognizes the critical importance of entrepreneurship in the life and health of both individuals and the community and seeks ways to recognize entrepreneurship within the community, encourage the investment in a deeper understanding of entrepreneurship, match needs of entrepreneurs to existing available resources or where no resources exist, endeavor to create those resources that are of value and contribute to both a higher quantity and quality of entrepreneurial activity.

The program will serve to guide entrepreneurs through a process of formation and growth, work to eliminate obstacles to success and foster an environment of entrepreneurship for the region.

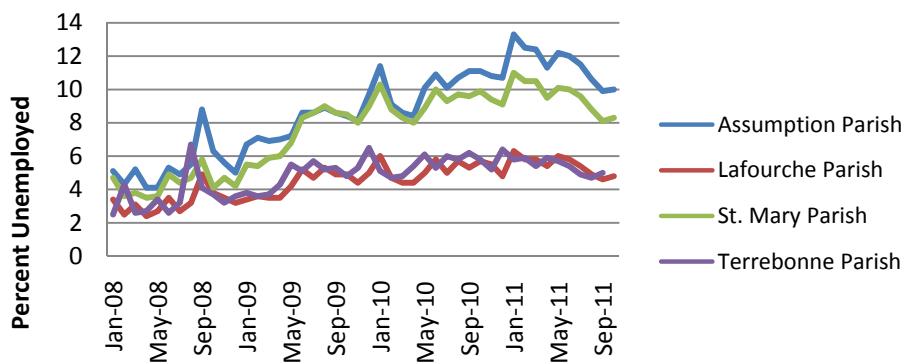


Facts & Figures

Bayou Region Monthly Employment January 2008 through Oct 2011

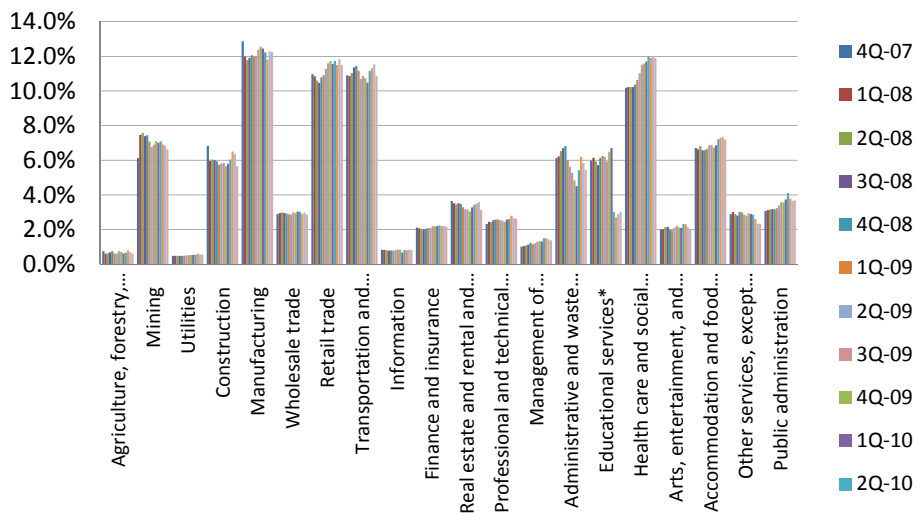


Monthly Unemployment Rate January 2008 through Oct 2011



Bayou Region Quarterly Wage & Employment by Sector

Louisiana Workforce Commission



From the Wall Street Journal's Economic Chartroom December 1, 2011

REAL GDP

Change from previous quarter at annual rate, seasonally adjusted



Source: Department of Commerce

UNEMPLOYMENT RATE

Seasonally adjusted



Source: Bureau of Labor Statistics

INDUSTRIAL PRODUCTION

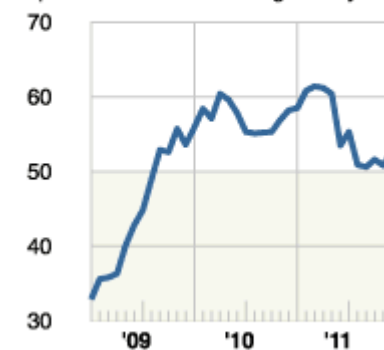
Change from previous month, seasonally adjusted



Source: Federal Reserve

PURCHASING MANAGERS' INDEX

Reading above 50 indicates expansion in manufacturing activity

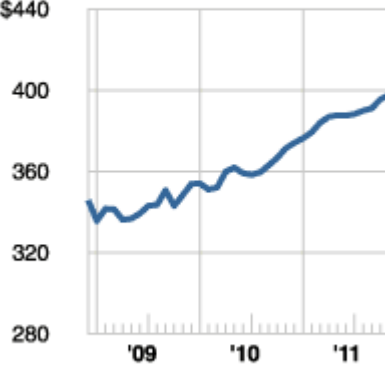


Source: Institute for Supply Mgmt.



RETAIL SALES

In billions, seasonally adjusted
\$440



Source: Department of Commerce

CONSUMER SPENDING

Personal consumption expenditures,
change from previous month,
seasonally adjusted



Source: Department of Commerce

CONSUMER CONFIDENCE

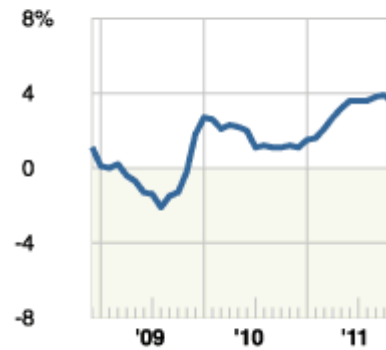
Index stood at 100 in 1985, its base
year



Source: Conference Board

CONSUMER PRICES

Change from previous year, not
seasonally adjusted



Source: Bureau of Labor Statistics



PRODUCER PRICES

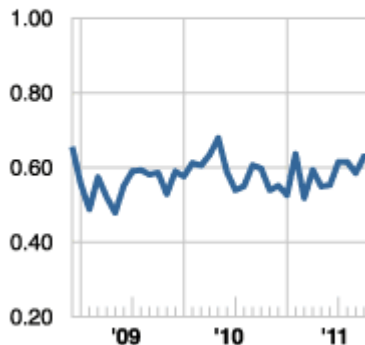
Change from previous year, not seasonally adjusted



Source: Bureau of Labor Statistics

HOUSING STARTS

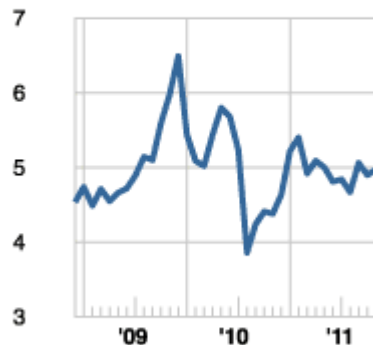
Annual rate in millions of units, seasonally adjusted



Source: Department of Commerce

EXISTING-HOME SALES

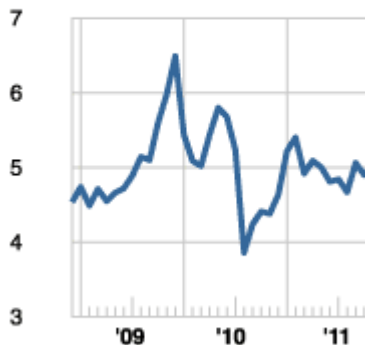
Annual rate, in millions of units, seasonally adjusted



Source: National Association of Realtors

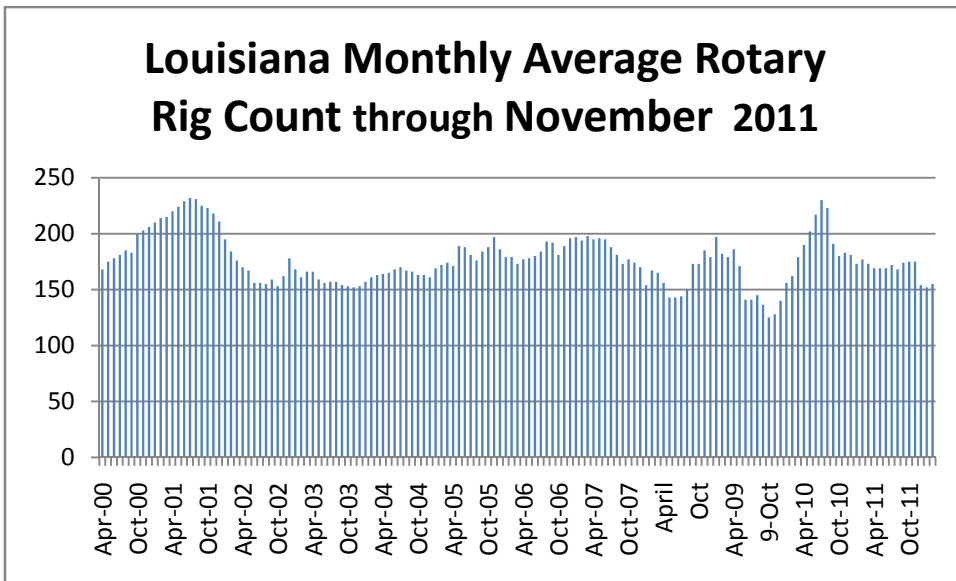
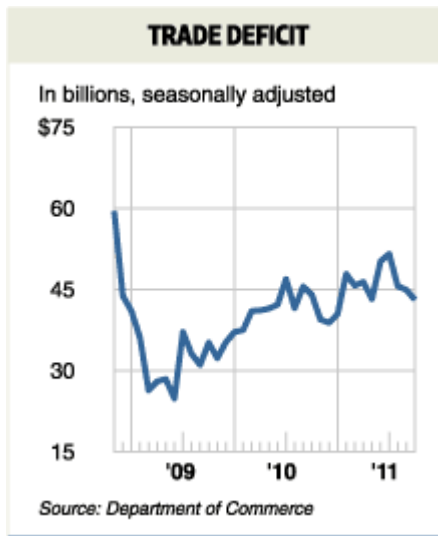
EXISTING-HOME SALES

Annual rate, in millions of units, seasonally adjusted



Source: National Association of Realtors





Price of Light Oil Crude



Appendices

SBDC and SEBD Clients Served, 2011

SBDC – SLEC's Represented Parishes

Parishes	Total
Assumption	16
Lafourche	153
St. Mary	16
Terrebonne	161
	340 (Total Clients)

SBDC – SLEC's Outer Parishes

Parishes	Total
Ascension	2
Cameron	1
East Baton Rouge	1
Jefferson	27
Orleans	6
St. Charles	5
St. James	4
St. John	2
Vermillion	1
	50 (Total Clients)

SEBD – SLEC's Represented and Outer Parishes

Parishes	Total
East Baton Rouge	1
Jefferson	1
Lafourche	17
St. James	1
St. Mary	3
Terrebonne	15
	38 (Total Clients)



Business Retention Company Visits, 2011

Company	Parish	City
Errol's Cajun Foods, Inc.	Assumption	Belle Rose
Game Equipment, LLC	Assumption	Napoleonville
Lula-Westfield, LLC	Assumption	Paincourtville
Rivere Foods, Inc.	Assumption	Paincourtville
Shelby Gaudet Contractor, Inc.	Assumption	Belle Rose
Allied Shipyard, Inc.	Lafourche	Larose
Crescent Crown Distributing	Lafourche	Thibodaux
Danos and Curole	Lafourche	Larose
Doug's Refrigeration	Lafourche	Thibodaux
Frost Lumber	Lafourche	Thibodaux
Gulf Logistics Operating, Inc.	Lafourche	Larose
Industrial Diesel Service, LLC	Lafourche	Galliano
Jambon Boat Rentals	Lafourche	Golden Meadow
John Deere Thibodaux, Inc.	Lafourche	Thibodaux
L & M Botruc Rental, Inc.	Lafourche	Galliano
Lafourche Arc	Lafourche	Thibodaux
Montco Offshore, Inc.	Lafourche	Larose
Offshore Towing, Inc.	Lafourche	Larose
Vision Communications	Lafourche	Larose
APEX CNC	St. Mary	Morgan City
Conner's Repair Service, LLC	St. Mary	Morgan City
Conrad Industries, Inc.	St. Mary	Morgan City
Cummins Mid-South, LLC	St. Mary	Morgan City
Diversified Environmental Products & Services	St. Mary	Franklin
Gulf Coast Broadband	St. Mary	Morgan City
Gulf Craft, LLC	St. Mary	Patterson
High Tech Steel Products, LLC	St. Mary	Amelia
InterMoor, Inc.	St. Mary	Morgan City
Jag Construction Services, Inc.	St. Mary	Morgan City
L.D. Marine, LLC	St. Mary	Amelia
L-H Printing	St. Mary	Morgan City
Omega Waste Management	St. Mary	Patterson
P&K Machine	St. Mary	Morgan City
Plus Sign, Inc.	St. Mary	Morgan City
RSM CNC, LLC	St. Mary	Berwick
Vast Industries, LLC	St. Mary	Morgan City



Benoit Machine	Terrebonne	Houma
Hunting Energy Services	Terrebonne	Houma
Hutco, Inc.	Terrebonne	Houma
Pirahnha Rentals	Terrebonne	Houma
Rig Chem	Terrebonne	Houma
Sontheimer Offshore Catering Co.	Terrebonne	Houma
T. Baker Smith, LLC	Terrebonne	Houma
Technology Professionals, LLC	Terrebonne	Houma



The South Louisiana Economic Council is a regionally focused economic development agency serving the parishes of Assumption, Lafourche, St. Mary and Terrebonne. Formed in 1983, SLEC provides industrial assistance and programs designed to create economic growth for the Bayou Region.

For more information, contact:

South Louisiana Economic Council, Inc.

P.O. Box 2048 – NSU

Thibodaux, LA 70310

310 Ardoyne Drive – SLEC Building

Nicholls State University

Phone: 985.448.4485

Fax: 985.448.4486

www.bayouregion.com

SLEC

South Louisiana Economic Council

Assumption • Lafourche • St. Mary • Terrebonne

